

Frequently Asked Questions

- **What does this mean for me?**

A reduction in administrative responsibility surrounding prior authorization.

- **Do I need to contact Pinnacol Assurance before I refer a patient to a specialist?**

If the provider is not in the **SelectNet** network, you **need** to contact Pinnacol for prior authorization.

If you are referring a patient to another **SelectNet** specialist, you **do not need** to contact Pinnacol prior to sending the patient.

- **What does this mean for the injured worker?**

The injured worker will more quickly receive the right care at the right time.

- **Do I continue to contact Pinnacol as I have in the past for prior authorization?**

You will continue to contact Pinnacol for prior authorization only for the procedures and services that are listed in this bulletin.

- **Will my bills get paid?**

Yes. Pinnacol has updated our bill processing system to ensure that all bills outside of the procedures and services listed in this bulletin will be processed and paid without an authorization number.

- **What if the date of injury is prior to May 1, but the date of service is after May 1? Will I need to obtain prior authorization?**

No, unless the procedure/service is on the list of services that require prior authorization.

- **What about services such as chiropractic, massage therapy, biofeedback, acupuncture, FCE, psychotherapy, work hardening, physical therapy, and occupational therapy?**

Prior authorization is as dictated by the Division of Workers' Compensation Rule 16 Utilization Standards:

“Prior authorization for payment shall be requested by the provider when:

A prescribed service exceeds the recommended limitations set forth in the medical treatment guidelines.

A prescribed service is identified within the medical fee schedule as requiring prior authorization for payment.”

Any procedure/service that was previously denied will remain in denial status.

If you have any questions, please call Pinnacol's Medical Operations team at 303-361-4945 or go to www.pinnacol.com and click on “**SelectNet** Web site.”

PINNACOL
ASSURANCE

**Attention
SelectNet Providers!**
**Here's some exciting news
from Pinnacol Assurance!**

APPROVED

**We're changing our prior authorization
requirements for all SelectNet Providers.**

SelectNet



Effective May 1, 2006, prior authorization is required for the following procedures/services:

Procedures/Surgeries/Services

- All surgeries and procedures within the first 20 days of the date of injury
- Any previously denied service or procedure
- Spine procedures/surgeries
- Total joint replacement surgeries
- Multiple body part surgeries
- Second surgeries (same body part)
- Implantable pumps
- Out-of-network referrals

Home Health Care/Durable Medical Equipment (DME)

- Prosthetics
- Home health care
- IF2 (stims)
- Wheelchair purchase
- Wheelchair rental > three months
- Home infusion therapy
- Lifts (hydraulic)
- Oxygen
- Hospital bed purchase
- Hospital bed rental > three months
- Any DME with a cost > \$1,500

Prior authorization is not necessary for diagnostic testing, referrals, or treatments, when use is consistent with the Medical Treatment Guidelines for the State of Colorado, Division of Workers' Compensation (DOWC).

Please refer to the DOWC Web site for additional information.
http://www.coworkforce.com/dwc/Medical_Treatment.asp

Any treatment or procedure that is not included in the guidelines still requires prior authorization.

Spine Procedure/Service

- Spine procedures – ortho
- Spine procedures – neurosurgery

Spine injections

Intrathecal/epidural catheters and pumps

Spinal stimulators

Spinal nerve ablation

Discogram/myelogram and epidurograms

Other spine procedures

Arthroplasty/Hemiarthroplasty

Fingers
 Hand/wrist

Elbow

Shoulder

Hip
 Patella
 Knee

Ankle

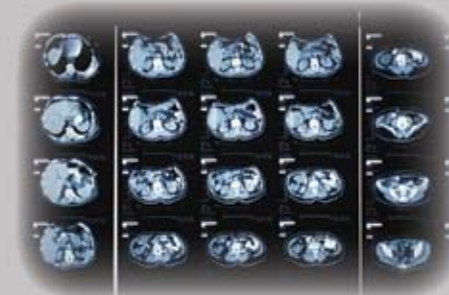
Code

- 22100-22899
- 62287
- 63001-63273
- 63300-63615
- 62280-62282
- 62310-62319
- 64470-64484
- 62350-62368
- 95990-95991
- 63655-63688
- 64550-64555
- 64561-64573
- 64581-64585
- 62263-62268
- 62280-62282
- 64622-64627

- 61055 62290-62292
- 62284 72240 72255
- 72265 72270 72275
- 72285 72295
- S2370 – IDET
- S2375 – Shockwave
- S91 – Disk replacement

Code

- 26530-26536
- 25332
- 25441-25449
- 24130
- 24360-24366
- 23195
- 23470-23472
- 27120-27138
- 27437-27438
- 27440-27447
- 27486-27487
- 27700-27703



PINNACOL
 ASSURANCE